



UNIVERSITAS
INDONESIA

Veritas, Probitas, Iustitia
EST. 1849

SUSTAINING TRACER STUDY AT UNIVERSITY LEVEL: UNIVERSITAS INDONESIA EXPERIENCE

Sandra Fikawati and Ahmad Syafiq
Career Development Center Universitas Indonesia
2012



UNIVERSITAS
INDONESIA

Veritas, Probitas, Iustitia
EST. 1849

Structure of Presentation

- 1. History of TS at university level**
- 2. Improvement of TSUI**
- 3. Management of TSUI**
- 4. Organization Structure**
- 5. Financial Aspect**
- 6. Coordination with other Directorates**
- 7. Result Dissemination**
- 8. Socialization to Alumni**
- 9. Advantage for Other Units**
- 10. Summary**



UNIVERSITAS
INDONESIA

Veritas, Probitas, Iustitia
EST. 1849

History of TSUI at University Level

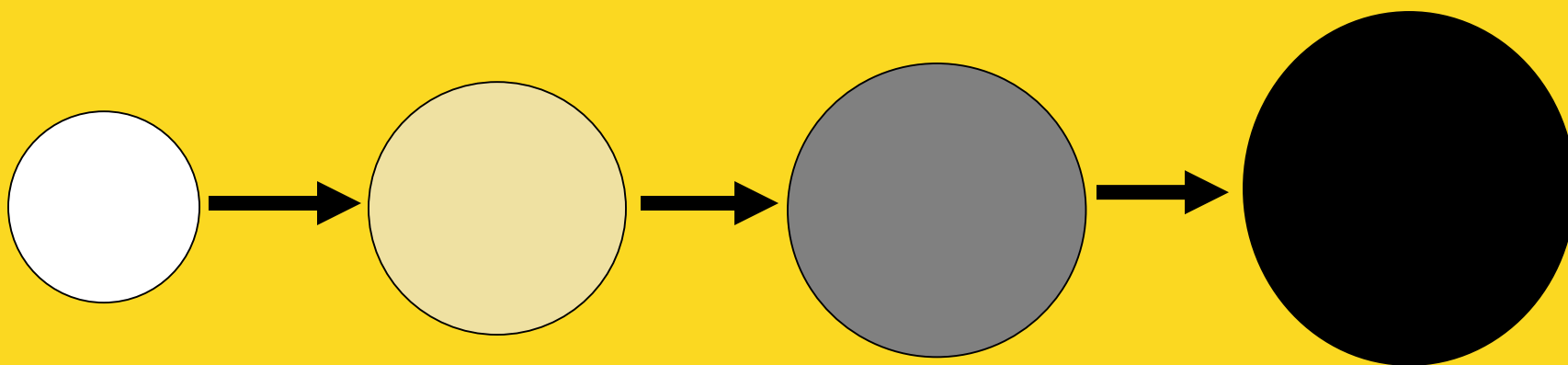
- * UI has implemented university TS in 2008,
- * In 2010, the method and instrument were upgraded.
- * Characteristics of UI TS since 2010 include:
 - * Censal (not sampling),
 - * Self-administered online data collection (no paper and interview),
 - * Standardized instrument (questionnaire), and
 - * Regular (implemented yearly)
- * Gradual expansion of target population



UNIVERSITAS
INDONESIA

Veritas, Probitas, Iustitia
EST. 1849

Improvement of TSUI



TSUI 2008

- Sample
- Not online
- S1 regular
- n=936

TSUI 2010

- Censal
- Online
- S1 regular
- N=5276

TSUI 2011

- Censal
- Online
- S1 regular
- S1 extension
- N=5564

TSUI 2012

- Censal
- Online
- S1 regular
- S1 extension
- S2/Specialist
- N=8476



UNIVERSITAS
INDONESIA

Veritas, Probitas, Justitia
EST. 1849

Response Statistics of TSUI 2011-2012

TSUI	2010		2011	
Number of target population	5276		5564	
Undelivered	668	6%	723	13%
Subject	4608	94%	4841	87%
Respondents	2535		2308	
Gross response rate	$2535/5276*100\%$	48%	$2308/5564*100\%$	42%
Net response rate	$2535/4608*100\%$	55%	$2308/4841*100\%$	48%



UNIVERSITAS
INDONESIA

Veritas, Probitas, Justitia
EST. 1849

Management of TSUI (1)

- * Career Development Center (CDC) is the implementer of TSUI since 2008.
- * The decision was made because:
 - * Relevant with the main target group of CDC-UI which is new alumni
 - * The experience of CDC-UI's personnel in conducting TS at the faculty level
 - * Limited people in UI had knowledge and experience in conducting TS
 - * Trust from upper management



UNIVERSITAS
INDONESIA

Veritas, Probitas, Iustitia
EST. 1849

Management of TSUI (2)

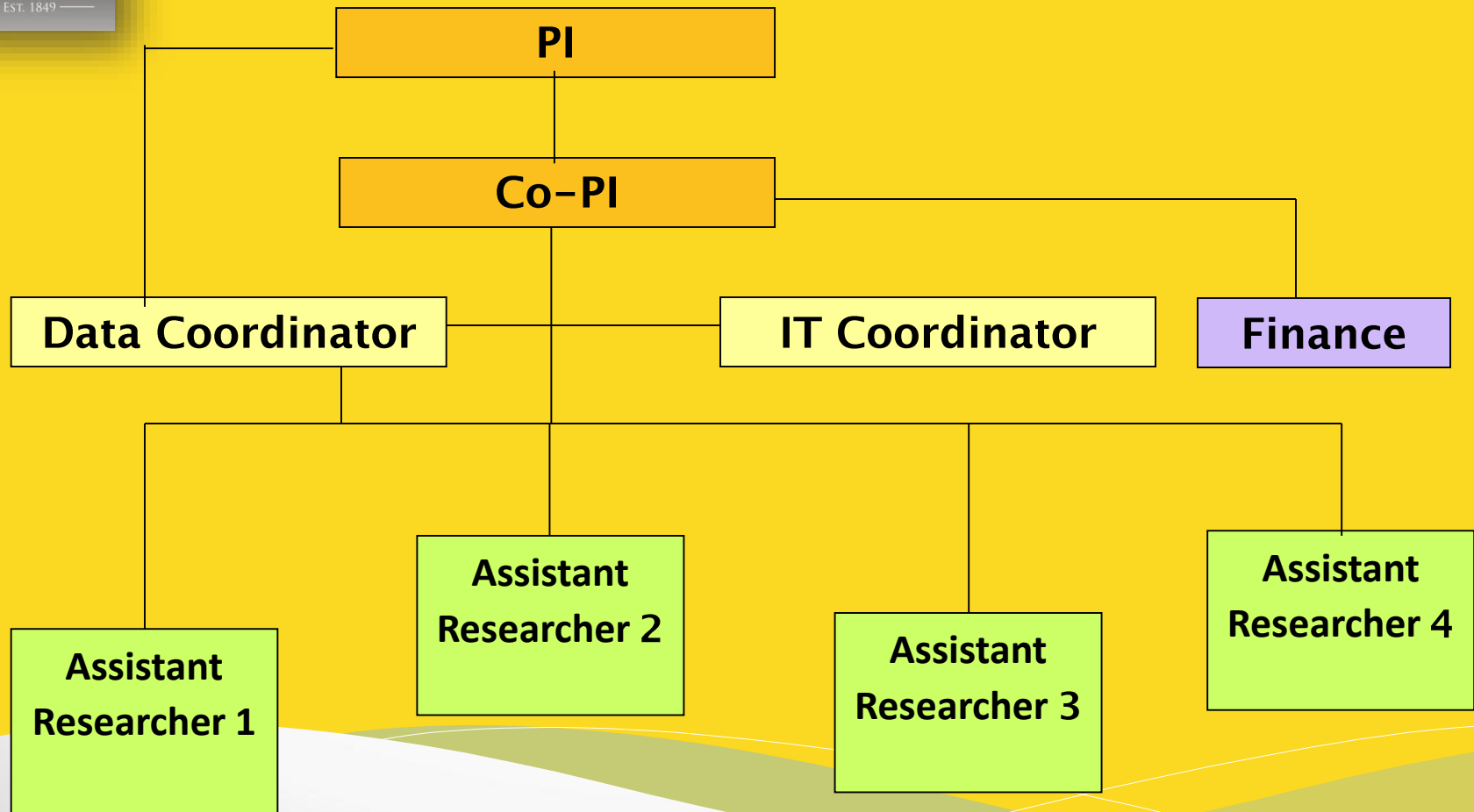
- * CDC-UI is employing different types of employee including
 - * Researchers (lead and co-lead, paid mainly by the government),
 - * Project/research based staff (data and IT coordinator, paid mainly by the university)
 - * Part-time worker (assistant researchers, mostly fresh graduate for reminder's job, paid monthly during the project).



UNIVERSITAS
INDONESIA

Veritas, Probitas, Justitia
EST. 1849

Organization Structure





UNIVERSITAS
INDONESIA

Data Collection and *Reminder*



Activities of Data Collectors



UNIVERSITAS
INDONESIA

Veritas, Probitas, Justitia
EST. 1849

Financial Aspect

- * As for the funding, CDC-UI has secured funding allocation through its yearly budgeting plan which includes TSUI.
- * In UI, CDC can get funding from university relatively easy because CDC-UI is a “profit center”, not a “loss center”. We can add or re-allocate the budget for tracer study.



UNIVERSITAS
INDONESIA

Veritas, Probitas, Justitia
EST. 1849

Coordination (1)

- * One important aspect in managing university level TS is the coordination with other unit at both university and faculty level.
- * Participatory approach is important to ensure that faculties support the idea and the implementation of TSUI.
- * This achieved through a series of dialogue in form of workshop, meetings, and socialization of results.



UNIVERSITAS
INDONESIA

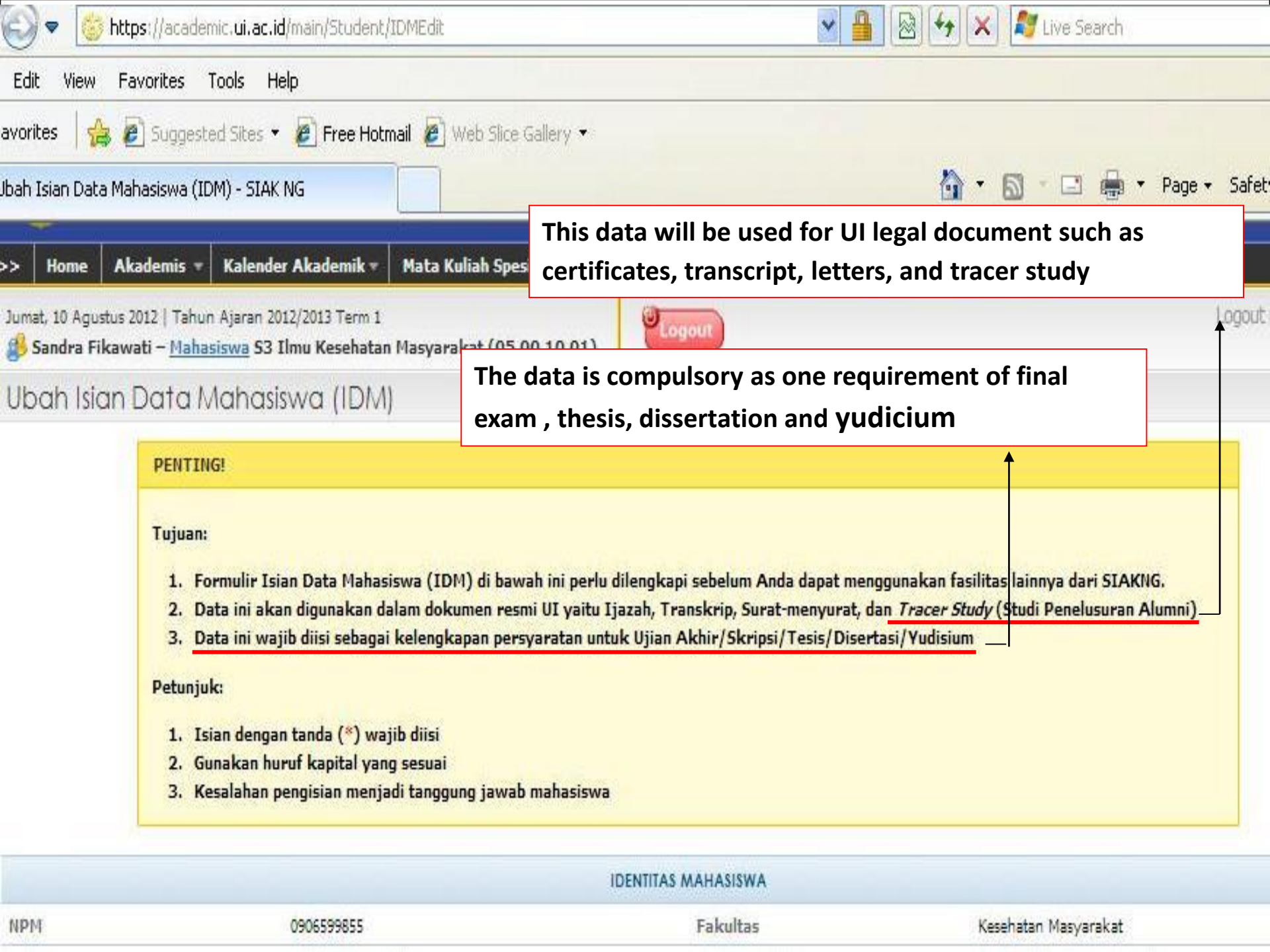


Questionnaire Development Workshop, Cipanas 20 July 2012

Coordination (2)

- * Coordination is established with other directorates:
 - * Directorate for Academic Affair and
 - * Directorate for Information Technology System
- * Coordination including:
 - * Formally informing about TS activity in the university database
 - * Requirement to update database prior to graduation
- * The number of undelivered cases decreased significantly

Percentage of undelivered cases		
TSUI 2010	TSUI 2011	TSUI 2012
6%	13%	0%



This data will be used for UI legal document such as certificates, transcript, letters, and tracer study

The data is compulsory as one requirement of final exam, thesis, dissertation and yudisium

PENTING!

Tujuan:

1. Formulir Isian Data Mahasiswa (IDM) di bawah ini perlu dilengkapi sebelum Anda dapat menggunakan fasilitas lainnya dari SIAKING.
2. Data ini akan digunakan dalam dokumen resmi UI yaitu Ijazah, Transkrip, Surat-menyurat, dan Tracer Study (Studi Penelusuran Alumni).
3. Data ini wajib diisi sebagai kelengkapan persyaratan untuk Ujian Akhir/Skripsi/Tesis/Disertasi/Yudisium.

Petunjuk:

1. Isian dengan tanda (*) wajib diisi
2. Gunakan huruf kapital yang sesuai
3. Kesalahan pengisian menjadi tanggung jawab mahasiswa

Jumlah Kakak 0 Jumlah Adik 0

Alamat Surat Menyurat/Pos *	Jl. Betok I no 34, Jakarta Timur
Kode Pos *	13220
Nomor Telepon *	+62214718777
E-Mail UI *	
Nama Bank	-

ORANG TUA

Nama Ayah		Nama Ibu	
Tahun Lahir Ayah	1980	Tahun Lahir Ibu	1980
Alamat Orang Tua/Tetap *	Jl. Gurame no 29 Rawamangun, Jakarta	Telepon Orang Tua	+62214894563
Kode Pos Orang Tua/Tetap *	13220	Nomor HP Orang Tua	+628161886394
Pendidikan Ayah	Magister	Pendidikan Ibu	Lain-Lain
Pekerjaan Ayah	Kosong	Pekerjaan Ibu	Kosong



UNIVERSITAS
INDONESIA

Veritas, Probitas, Justitia
EST. 1849

Result Dissemination

- * Result dissemination is a compulsory activity in the middle of the year after finishing the analysis
- * In the same time, collecting database and socializing the next tracer study schedule are also conducted
- * As important medium for raising awareness on the objectives of implementing tracer study in university level:
 - * More effective, less budget
 - * Benchmarking
 - * High quality of tracer study method
 - * No disadvantages. Without conducting their own study, they still can get information they need.



UNIVERSITAS
INDONESIA

Veritas, Probitas, Justitia
EST. 1849

Result Dissemination at Faculty and University Level





UNIVERSITAS
INDONESIA

Veritas, Probitas, Justitia
EST. 1849

Socialization

To Alumni:

- * Socialization to the alumni is conducted:
 - * During their graduation ceremony
 - * Inserting in rector speech
 - * Inserting in media promotion (video)
 - * Tracer study information is published in the alumni website and faculty website.

To students:

- * Learning orientation program
- * Student profession seminars

TRACER STUDY

AYO PARTISIPASI DALAM TRACER STUDY UI 2012

Seluruh alumni
S1 tahun 2010
dimohon berkenan
untuk mengisi
kuesioner

All alumni S1 2010
please fill in the
questionnaire

Berita Fakultas

1. [Peluncuran Buku Direktori Satu Abad Lulusan RS, RHS & ILUNI FHUI 1912-2012](#)
2. [Alumni FIK UI Bersatu](#)
3. [Angkat Sumpah Lulusan Ners ke-48](#)
4. [Peresmian Ruang Makes Faculty Hall](#)

Berita Universitas

1. [LEPAS SAMBUT & PERESMIAN PENGURUS ILUNI UI MASA BAKTI 2011-2014 SERTA SILATURAHIM AWAL TAHUN 2012](#)
2. [SILATURAHIM AKHIR TAHUN 2011 & TEMU KANGEN MANTAN PEMBINA KEMAHASISWAAN UI & PERWAKILAN PENGURUS ALUMNI UNIT KEGIATAN MAHASISWA \(UKM\) UI](#)
3. [MUSYAWARAH NASIONAL VI ILUNI UI](#)
4. [Penerimaan Anggota Baru ILUNI-UI](#)

Video



Tracer Study UI 2010-2014

	Tahun 1 (2010)	Tahun 2 (2011)	Tahun 3 (2012)	Tahun 4 (2013)	Tahun 5 (2014)
Survei Pertama	Alumni S1 2008	Alumni S1 2009	Alumni S1 2010	Alumni S1 2011	Alumni S1 2012
Survei Kedua				Alumni S1 2008	Alumni S1 2009

Anda akan kami kontak pada **tahun 2014**
Mohon partisipasi dan responsnya

You will be contacted **by 2014**. Please participate and respond



UNIVERSITAS
INDONESIA

Veritas, Probitas, Iustitia
EST. 1849

Advantage for Other Units

- * Implementation of TSUI has positive impact for other units in university level including providing data for Office of Development, Public Relations Office, and faculties
- * TS is providing input to improve and to ensure the update of student-graduate database.



UNIVERSITAS
INDONESIA

Veritas, Probitas, Justitia
EST. 1849

Demand for TSUI data

Study Program/Faculty	Date	Purpose
UI Planning & Development. Office	Jan 2011	Data for <i>University Ranking</i>
Dept of Physics, UI	Feb 2011	Accreditation
F. of Nursing UI	March 2011	Accreditation
F. of Public Health UI	March 2011	Accreditation, data support for department improvement program (curricula reform & language laboratorium development)
International Office, UI	April 2011	Accreditation
Electrical Engineering, UI	May 2011	Accreditation, new curricula development
Communication Office UI	May 2011	* Guidelines for UI entrance (SIMAK UI) * Study Program Education Exhibition
F. of Humanities UI	Oct 2011	Accreditation
F. of Economics UI	Jan 2012	Accreditation
F. of Math & Natural Science UI	Jan 2012	Accreditation



UNIVERSITAS
INDONESIA

Veritas, Probitas, Justitia
EST. 1849

In summary...

1. History of TS at university level
 - * TS is not quick-fix & instant, but need endurance, resilience, and prolonged learning
2. Improvement of TSUI
 - * TS can always be improved (design & method, target population, content)
3. Management of TSUI
 - * Needs strong management support
 - * Needs to be managed in a unit (in UI: CDC)
4. Organization Structure
 - * Small but effective
5. Financial Aspect
 - * Financial security combined by appropriate strategy (yearly budget, re-allocation budget)



UNIVERSITAS
INDONESIA

Veritas, Probitas, Justitia
EST. 1849

In summary...

1. Coordination with other Directorates
 - * Should be done early
 - * Use university hierarchy
2. Result Dissemination
 - * Essential activity and to be scheduled
 - * Upper management, faculty, student
3. Socialization to Alumni
 - * Pre-reminder
4. Advantage for Other Units
 - * Continuous support
 - * Maintaining trust



UNIVERSITAS
INDONESIA

Veritas, Probitas, Justitia
EST. 1849

**Thank You Very Much
for your kind attention**